

CLESTA

DENTAL CHAIR

PARTS LIST

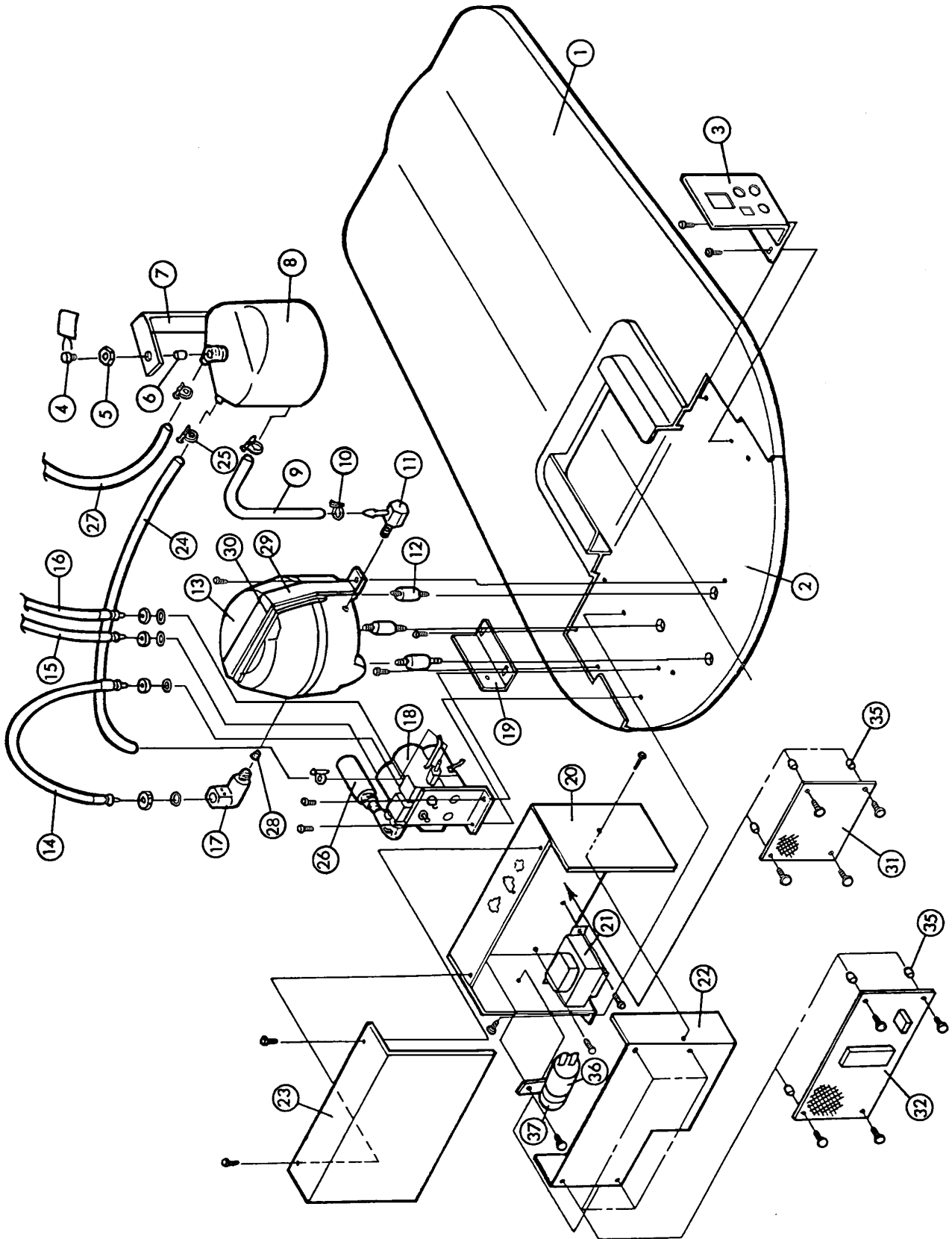
 **Belmont**

CLESTA CHAIR PARTS LIST

TABLE OF CONTENTS

BASE SECTION	PAGE	1
FLANGE SECTION	PAGE	3
SEAT SECTION	PAGE	5
BACKREST SECTION	PAGE	6
HEADREST SECTION	PAGE	7
FOOT CONTROL SECTION	PAGE	8
POWER SUPPLY SECTION	PAGE	9
HYDRAULIC SECTION	PAGE	10
ELECTRIC SECTION	PAGE	11
HEADREST SECTION (TWIN AXIS HEADREST)	PAGE	12

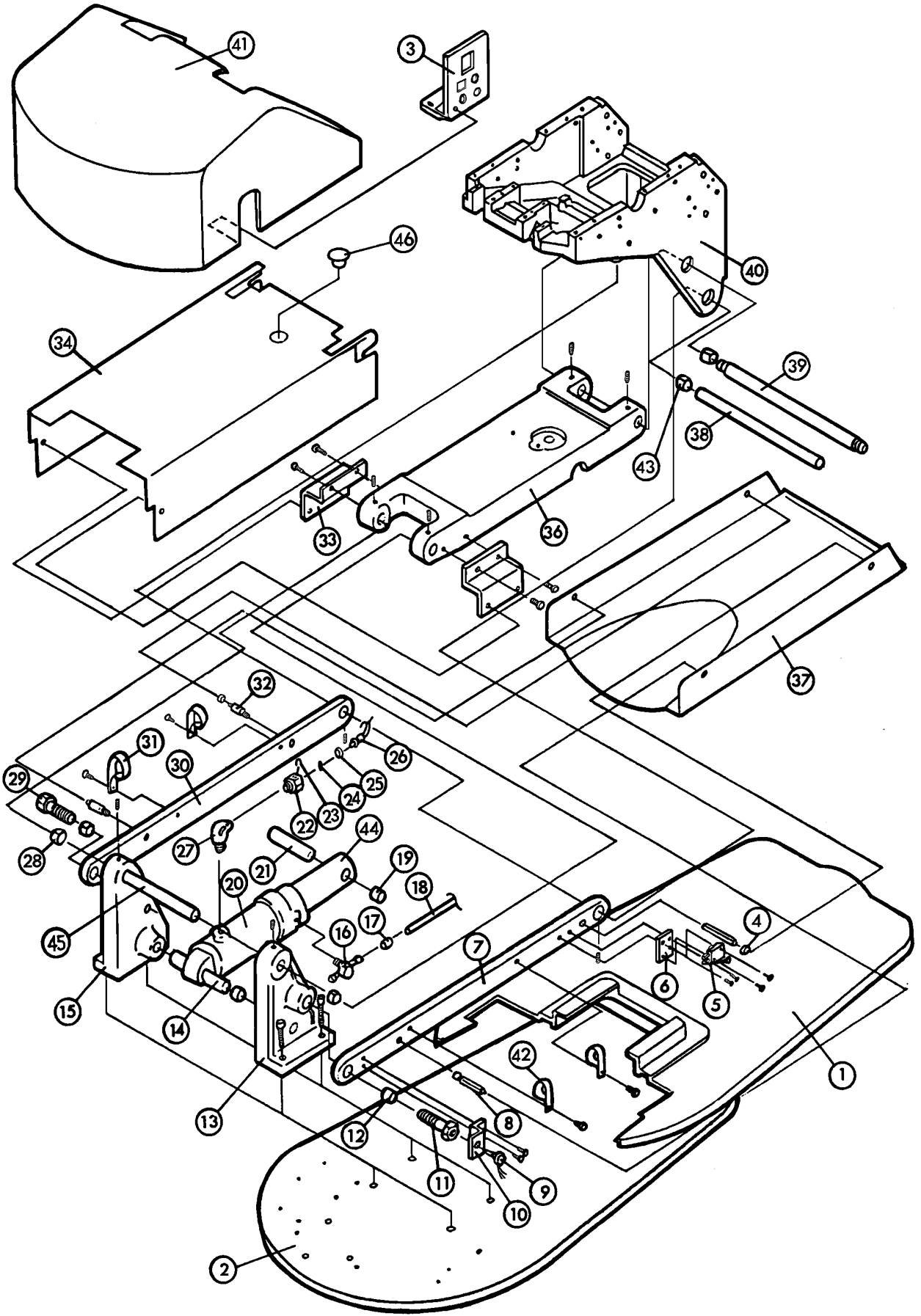
CLESTA CHAIR BASE SECTION-1



CLESTA CHAIR BASE SECTION-1

INDEX NO.	PARTS CODE NO.	DESCRIPTION	QUANTITY
1	A-3149	BASE MAT	1
2	A-3148	BASE PLATE	1
3	M-3008	POWER SUPPLY PANEL	1
	M-3009	POWER SUPPLY PANEL(ENGLAND TYPE)	1
4	F-6170	RUBBER PLUG	1
5	Q-2069	NUT FOR OIL RESERVOIR	1
6	F-6142	FILTER FOR OIL RESERVOIR	1
7	Q-3252	OIL RESERVOIR HOLDER	1
8	C-3244	OIL RESERVOIR - C	1
9	Q-2279	LOW PRESSURE HOSE ID.8-320L (OIL RESERVOIR TO MOTOR)	1
10	F-2269	WIRE CLAMP ID.13	2
11	Q-3171	L-MOTOR NIPPLE	1
12	R-1214	SHOCK ABSORBER RUBBER	3
13	D-6063	MOTOR PUMP ASSEMBLY 5LP (100V)	1
	D-6065	MOTOR PUMP ASSEMBLY 5LP (115V)	1
	D-6067	MOTOR PUMP ASSEMBLY 5LP (220V)	1
	D-6069	MOTOR PUMP ASSEMBLY 5LP (240V)	1
14	U-3324	HIGH PRESSURE HOSE ID.3-430L (MOTOR TO SOLENOID VALVE UNIT)	1
15	Q-2243	HIGH PRESSURE HOSE ID.3-580L (ELEVATION CYLINDER TO SOLENOID VALVE UNIT)	1
16	Q-2244	HIGH PRESSURE HOSE ID.3-1000L (RECLINING CYLINDER TO SOLENOID VALVE UNIT)	1
17	SALA06A0	HOSE ELBOW 1/4" W/P3 O-RING, RETAINER RING & U-PIN	1
18	X-8120	SOLENOID VALVE UNIT (100V)	1
	X-8121	SOLENOID VALVE UNIT (115V)	1
	X-8122	SOLENOID VALVE UNIT (220V)	1
	X-8123	SOLENOID VALVE UNIT (240V)	1
19	G-0084	PUMP COVER BRACKET	1
20	M-3002	P.C.B. BOX COVER A	1
21	X-2107	TRANSFORMER TK-100V-2	1
	X-2801	TRANSFORMER TK-115US-2	1
	X-2109	TRANSFORMER TK-220VU-2	1
	X-2110	TRANSFORMER TK-240V-2S	1
22	M-3004	P.C.B. BOX COVER B	1
23	M-3003	P.C.B. BOX COVER C	1
24	X-5557	LOW PRESSURE HOSE ID.5-340L (OIL RESERVOIR TO SOLENOID VALVE UNIT)	1
25	F-2268	WIRE CLAMP ID.10	4
26	X-8107	ACCUMULATOR	1
27	X-5557	LOW PRESSURE HOSE ID.5-700L (OIL RESERVOIR TO ELEVATION CYLINDER)	1
28	F-6133	STRAINER	1
29	F-6158	MOTOR BAND (METAL)	1
30	S-3020	MOTOR BELT (RUBBER)	1
31	X-8115	RELAY P.C.B. 100/115V	1
	X-8116	RELAY P.C.B. 220/240V	1
32	X-8204	CONTROL P.C.B.	1
35	X-8197	SPACER 7L	8
36	X-5001	CAPACITOR (100V)	1
	X-5002	CAPACITOR (115/220/240V)	1
37	X-6155	CAPACITOR BAND	1

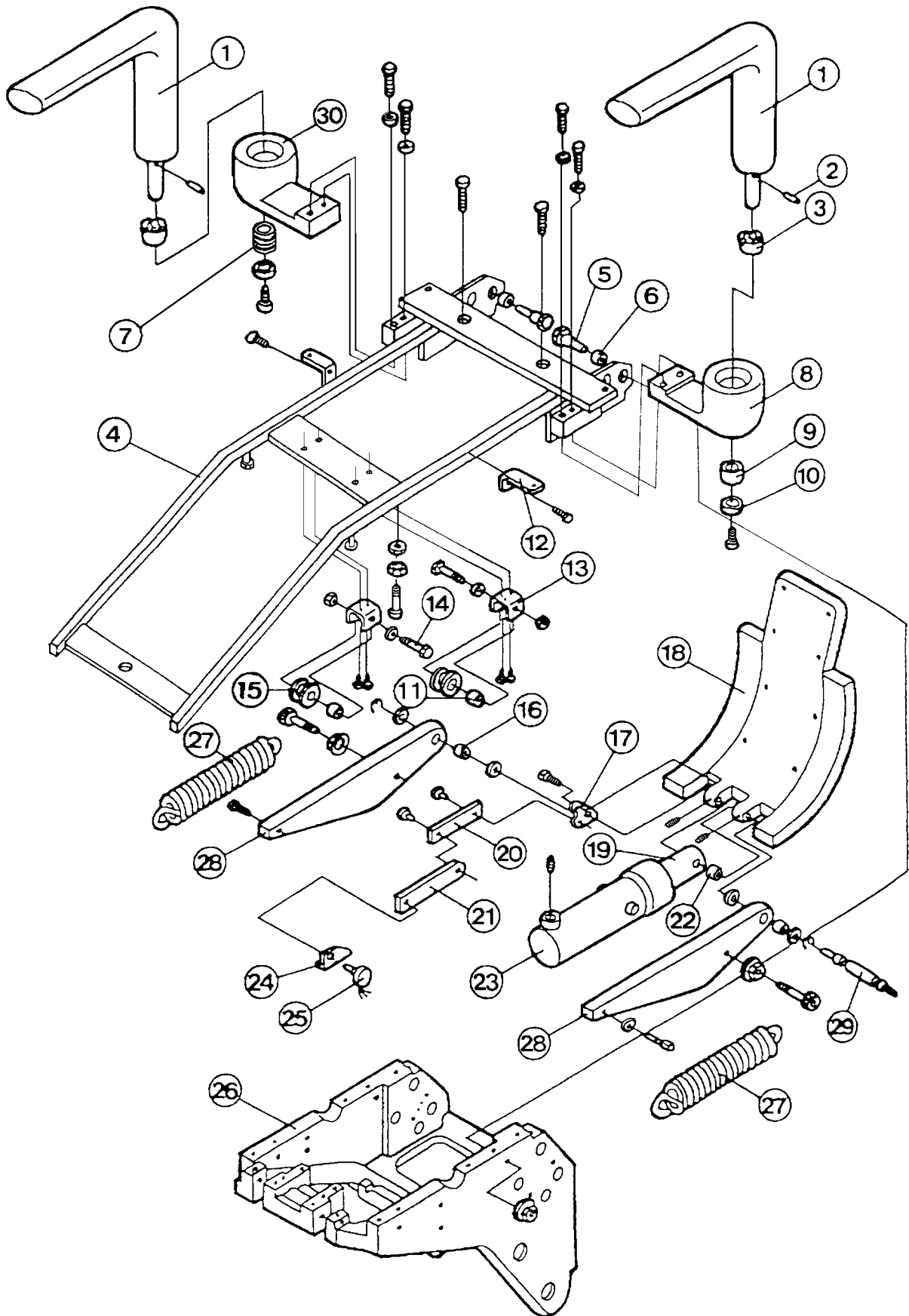
CLESTA CHAIR BASE SECTION-2



CLESTA CHAIR BASE SECTION-2

INDEX NO. TITY	PARTS CODE NO.	DESCRIPTION	QUAN-
1	A-3149	BASE MAT	1
2	A-3148	BASE PLATE	1
3	M-3008	POWER SUPPLY PANEL	1
	M-3009	POWER SUPPLY PANEL (ENGLAND TYPE)	1
4	X-7068	SILENCER RUBBER	2
5	X-6313	MICRO SWITCH FOR CHAIR LOWERING SECURITY	1
6	G-0087	MICRO SWITCH BRACKET	1
7	J-3273	SUB-LINK (LEFT)	1
8	G-0124	SPACER FOR SUB-LINK COVER (LEFT)	2
9	X-6517	POTENTIOMETER	1
10	U-3330	POTENTIOMETER BRACKET - A	1
11	G-0123	SHOULDER BOLT FOR SUB-LINK (LEFT)	1
12	X-4321	DU BUSH MB1812DU	2
13	M-3010	LINK BRACKET (LEFT)	1
14	P-3439	ELEVATION CYLINDER PIN	1
15	K-3181	LINK BRACKET (RIGHT)	1
16	Q-3585	T-JOINT 1/8"	1
17	X-5514	SLEEVE ID.6	2
18	X-5513	LOW PRESSURE HOSE ID.4-620L (RECLINING CYLINDER TO ELEVATION CYLINDER)	1
19	X-6340	DU BUSH MB1820DU	2
20	K-3012	ELEVATION CYLINDER	1
21	R-3195	ELEVATION CYLINDER RAM PIN	1
22	SALA03A0	MINI HOSE JOINT ASSEMBLY WITH P3 O-RING, RETAINER RING 1, U-PIN	1
23	Q-6237	U-PIN	1
24	F-3470	P3 O-RING	1
25	Q-6241	RETAINER RING	1
26	Q-2243	HIGH PRESSURE HOSE ID.3-580L (ELEVATION CYLINDER TO SOLENOID VALVE BLOCK)	1
27	F-6218	STREET ELBOW 1/4"-1/4"	1
28	X-6340	DU BUSH MB1820DU	2
29	R-3196	SHOULDER BOLT FOR SUB LINK (RIGHT)	1
30	J-3272	SUB-LINK (RIGHT)	1
31	Q-3113	NYLON CLAMP 5/8"	1
32	G-0086	SPACER FOR SUB-LINK COVER (RIGHT)	2
33	G-0085	BRACKET FOR MAIN LINK COVER	2
34	H-3087	MAIN LINK COVER	1
36	H-3086	MAIN LINK	1
37	H-3088	SUB-LINK COVER (RAL-9002)	1
38	J-3274	LINK SHAFT - B	1
39	J-3275	LINK SHAFT - C	1
40	A-3728	FLANGE	1
41	H-3085	PUMP COVER	1
42	X-5045	NYLON CLAMP 1/2"	3
43	X-6340	DU BUSH MB1820DU	4
44	T-3432	ELEVATION CYLINDER RAM SHAFT	1
45	P-3440	LINK SHAFT - A	1
46	X-7937	PLUG (DP-1093)	1

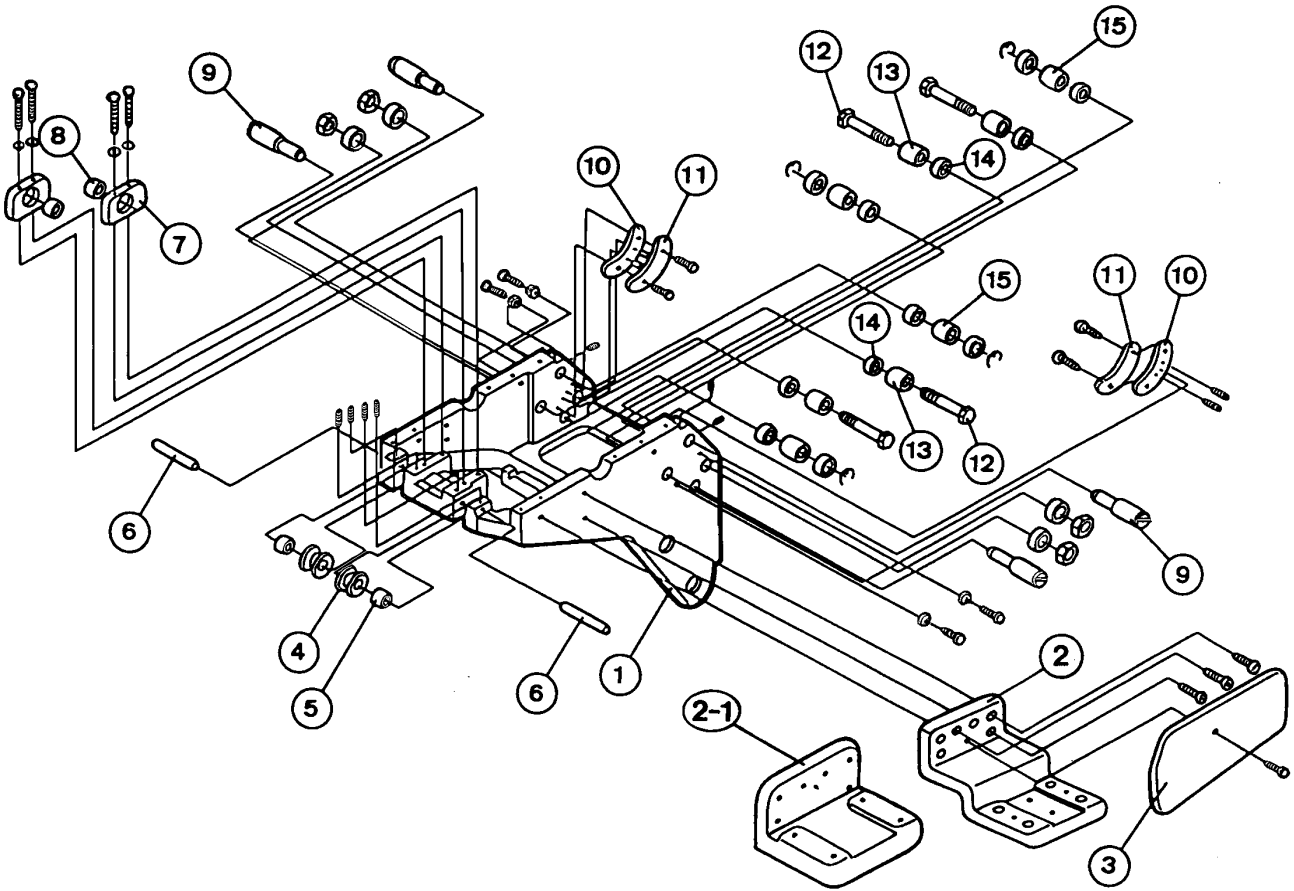
CLESTA CHAIR FLANGE SECTION-1



CLESTA CHAIR FLANGE SECTION-1

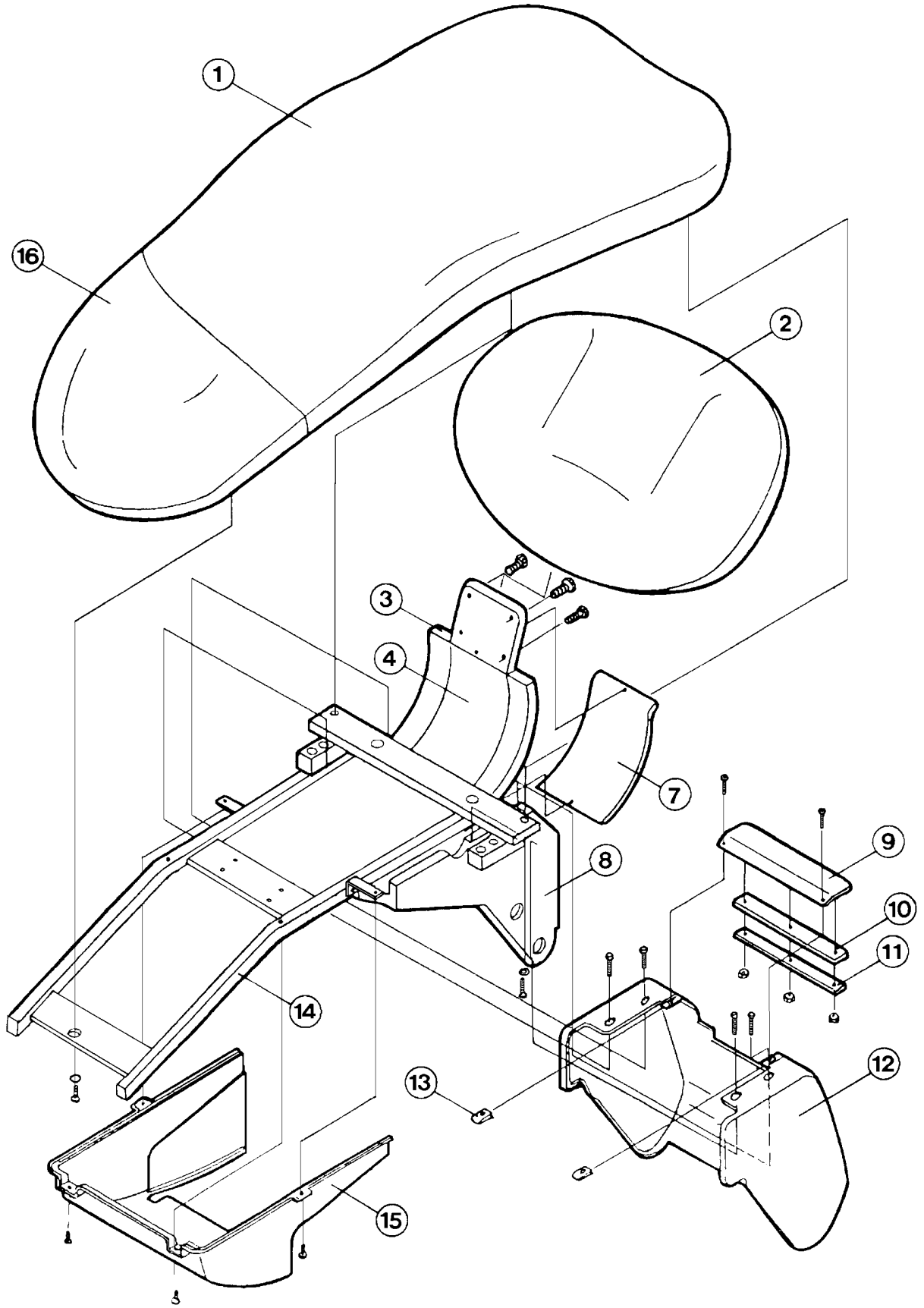
INDEX NO.	PARTS CODE NO.	DESCRIPTION	QUANTITY
1	M-3980	ARMREST (R1-1005)	1
2	Q-3586	ARMREST PIN	1
	Q-3586	ARMREST PIN (OPTION)	(2)
3	Q-3502	ARMREST CAM	1
	Q-3502	ARMREST CAM (OPTION)	(2)
4	DALB06AA	SEAT FRAME	1
5	G-0101	TILT PIN	2
6	X-5763	DU BUSH MB1206-20PDU	2
7	Q-3505	ARMREST SPRING (OPTION)	(1)
8	M-3981	ARMREST BRACKET (LEFT) W/CAM Q-3502 (R1-1005)	1
9	Q-3642	ARMREST COLLAR	1
10	Q-3503	ARMREST WASHER	1
11	X-7457	DU BUSH MB0812DU	2
12	G-0105	BRACKET FOR FLANGE FRONT COVER	2
13	G-0122	ROLLER HOLDER	2
14	G-0104	SHOULDER BOLT FOR ROLLER - A	2
15	G-0095	ROLLER - A	2
16	X-6651	DU BUSH MB1012DU	2
17	G-0093	BRACKET FOR LINK - B	1
18	L-3618	BACKREST BRACKET	1
19	N-3721	RECLINING CYLINDER RAM SHAFT	1
20	G-0092	LINK - B	1
21	G-0091	LINK - A	1
22	X-2711	DU BUSH MB1220DU	1
23	N-3720	RECLINING CYLINDER	1
24	G-0094	POTENTIOMETER BRACKET - B	1
25	X-6517	POTENTIOMETER	1
26	A-3728	FLANGE	1
27	J-3791	RECLINING CYLINDER SPRING	2
28	N-3723	TILT BAR	2
29	G-0090	RECLINING CYLINDER RAM PIN	1
30	M-3993	ARMREST BRACKET (RIGHT) (OPTION) (R1-1005)	(1)
	521000	ARMREST ASSEMBLY W/BRACKET FOR RIGHT SIDE (OPTION)	

CLESTA CHAIR FLANGE SECTION-2



INDEX NO.	PARTS CODE NO.	DESCRIPTION	QUANTITY
1	A-3728	FLANGE	1
2	M-3987	MOUNTING BRACKET A TYPE (RAL-9002)	1
2-1	C-0027	MOUNTING BRACKET B TYPE (RAL-9002) (OPTION)	(1)
3	N-3725	MOUNTING BRACKET COVER	1
4	G-0095	ROLLER-A	2
5	X-7457	DU BUSH MB0812DU	2
6	G-0096	ROLLER SHAFT	2
7	N-3724	RECLINING CYLINDER BRACKET	2
8	X-4321	DU BUSH MB1812DU	2
9	G-0099	ADJUSTING ROLLER SHAFT FOR ROLLER-C	4
10	R-3530	ADJUSTING PLATE FOR GUIDE PLATE	2
11	R-3531	BACKREST BRACKET GUIDE PLATE	2
12	G-0100	SHOULDER BOLT FOR ROLLER-B	4
13	X-8108	ROLLER-B	4
14	G-0089	COLLAR FOR ROLLER-B	4
15	E-6050	ROLLER-C	4

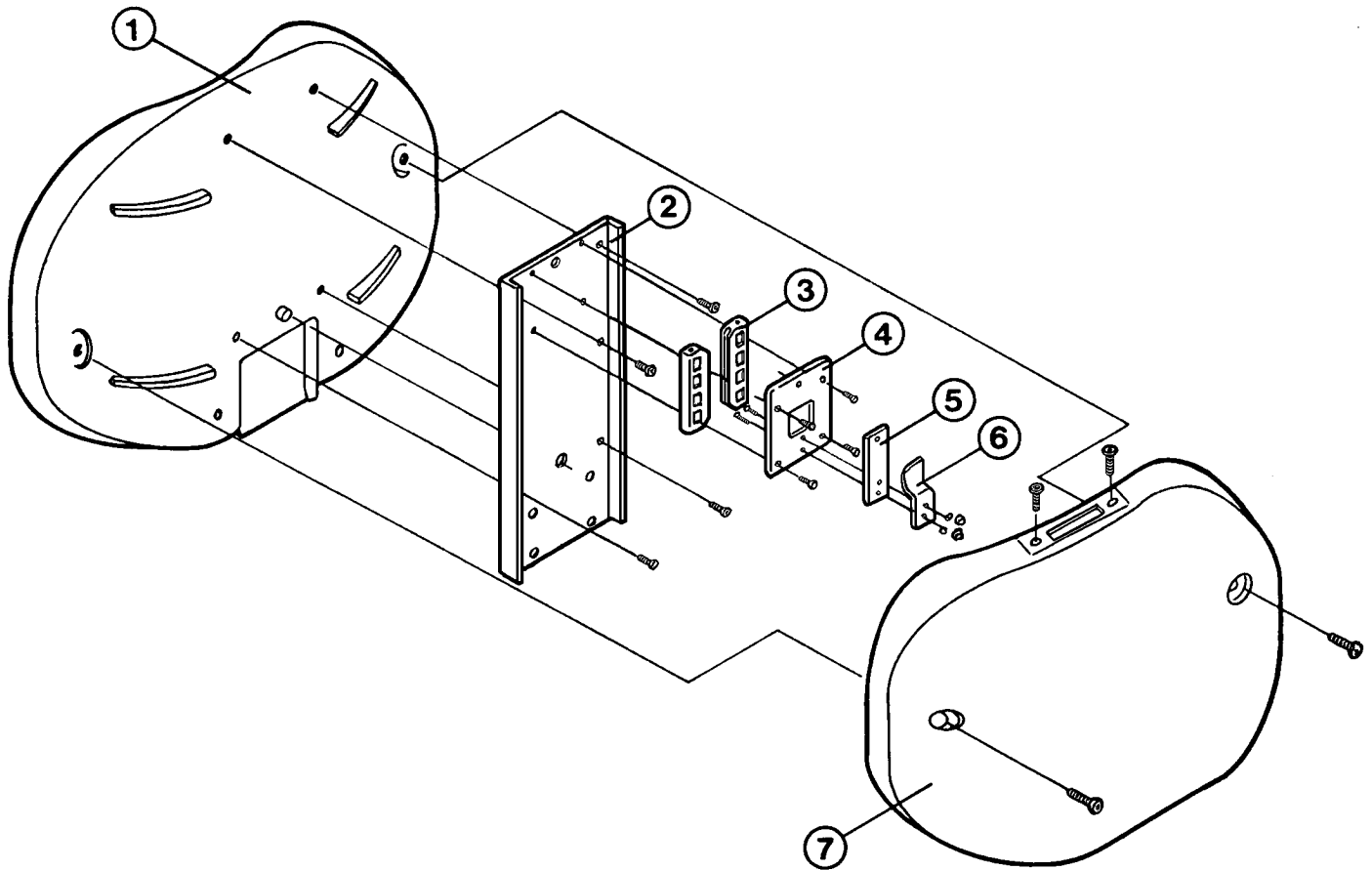
CLESTA CHAIR SEAT SECTION



CLESTA CHAIR SEAT SECTION

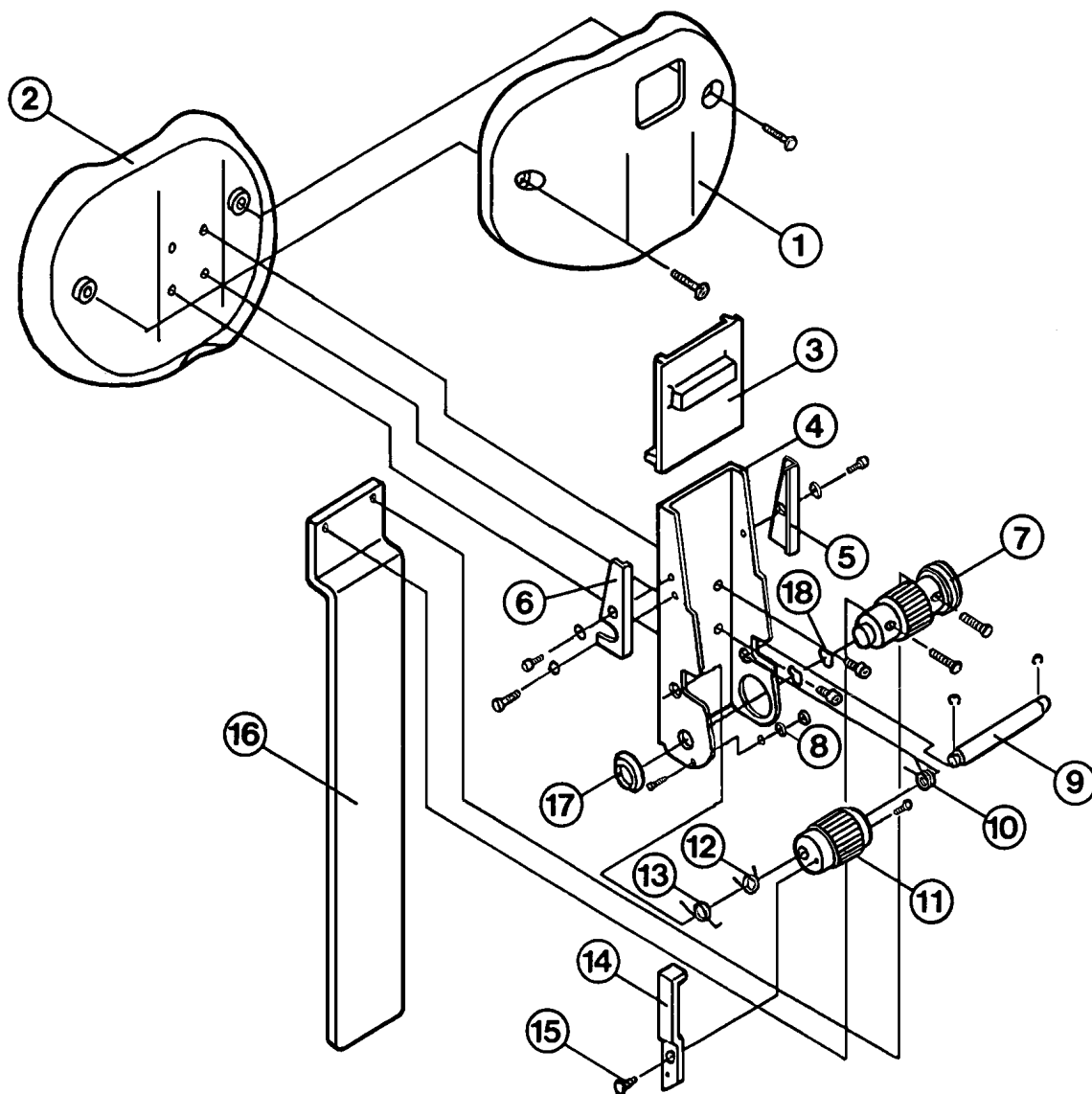
INDEX NO.	PARTS CODE NO.	DESCRIPTION	QUANTITY
1	A-3729,A-3736	SEAT CUSHION ASSEMBLY W/VINYL LEATHER COVERING	1
	A-3729,X-8264	SEAT CUSHION ASSEMBLY W/O VINYL LEATHER COVERING	
2	L-3620,A-3737	BACKREST CUSHION ASSEMBLY W/VINYL LEATHER COVERING	1
	L-3620,DEMR96AA	BACKREST CUSHION ASSEMBLY W/O VINYL LEATHER COVERING	
3	L-3618	BACKREST BRACKET	1
4	M-3984	BACKREST BRACKET FRONT COVER	1
7	M-3983	BACKREST BRACKET REAR COVER	1
8	A-3728	FLANGE	1
9	N-3722	UPPER FLANGE COVER	1
10	G-0098	FELT PACKING	1
11	G-0097	FELT PACKING HOLDER	1
12	L-3615	FLANGE REAR COVER	1
13	X-6731	SPEED NUT TYPE U USN 4007	2
14	DALB06AA	SEAT FRAME	1
15	L-3617	FRONT FLANGE COVER	1
16	M-3988	SEAT COVER	1

CLESTA CHAIR BACKREST SECTION



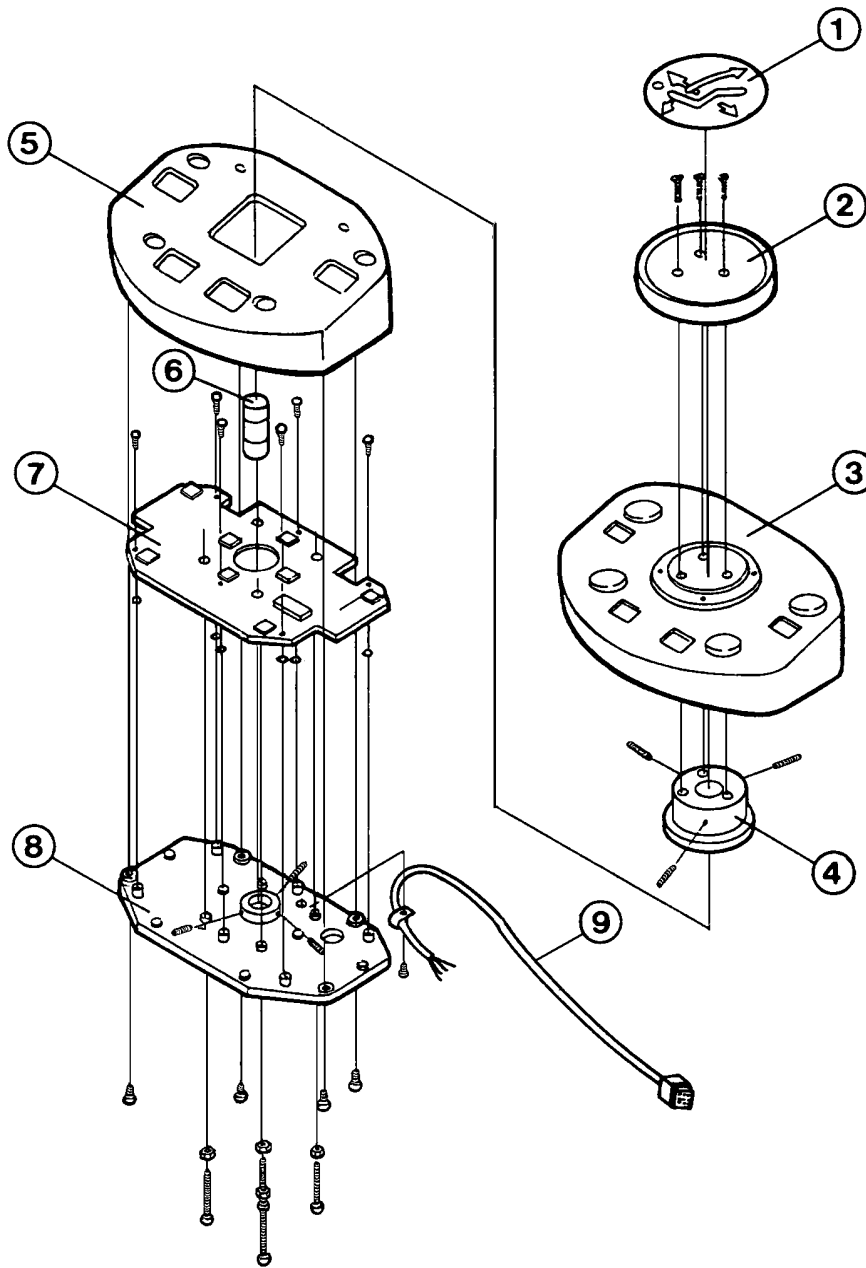
INDEX NO.	PARTS CODE NO.	DESCRIPTION	QUANTITY
1	L-3620,A-3737	BACKREST CUSHION ASSEMBLY W/VINYL LEATHER COVERING	1
	L-3620,DEMR96AA	BACKREST CUSHION ASSEMBLY W/O VINYL LEATHER COVERING	
2	M-3982	BACKREST PLATE	1
3	U-3534	HEADREST BAR GUIDE	2
4	S-3738	HEADREST BAR BACK PLATE	1
5	S-3740	HEADREST BAR RUBBING BLOCK	1
6	S-3739	HEADREST BAR ADJUSTING SPRING	1
7	L-3619	BACKREST CUSHION REAR COVER	1

CLESTA CHAIR HEADREST SECTION



INDEX NO.	PARTS CODE NO.	DESCRIPTION	QUANTITY
1	M-3985	HEADREST CUSHION REAR COVER	1
2	C-0025	HEADREST CUSHION ASSEMBLY W/VINYL LEATHER COVERING	1
	L-3621,DEMR97AA	HEADREST CUSHION ASSEMBLY W/O VINYL LEATHER COVERING	
3	N-3746	SLIDE PLATE	1
4	M-3986	HEADREST FRAME	1
5	G-0120	SLIDE PLATE BRACKET (RIGHT)	1
6	G-0121	SLIDE PLATE BRACKET (LEFT)	1
7	G-0106	HEADREST GEAR-A	1
8	DALR75AA	HEADREST BAR STOPPER	1
9	G-0108	HEADREST GEAR SHAFT	1
10	G-0109	SPRING-A	1
11	G-0107	HEADREST GEAR-B	1
12	G-0110	SPRING-B	1
13	G-0111	SPRING-C	1
14	G-0113	RELEASE LEVER	1
15	G-0112	SHOULDER BOLT FOR LEVER	1
16	N-3727	HEADREST BAR	1
17	-----	BUSH FOR HEADREST GEAR-A	1
18	-----	WAVE WASHER WW-10	2

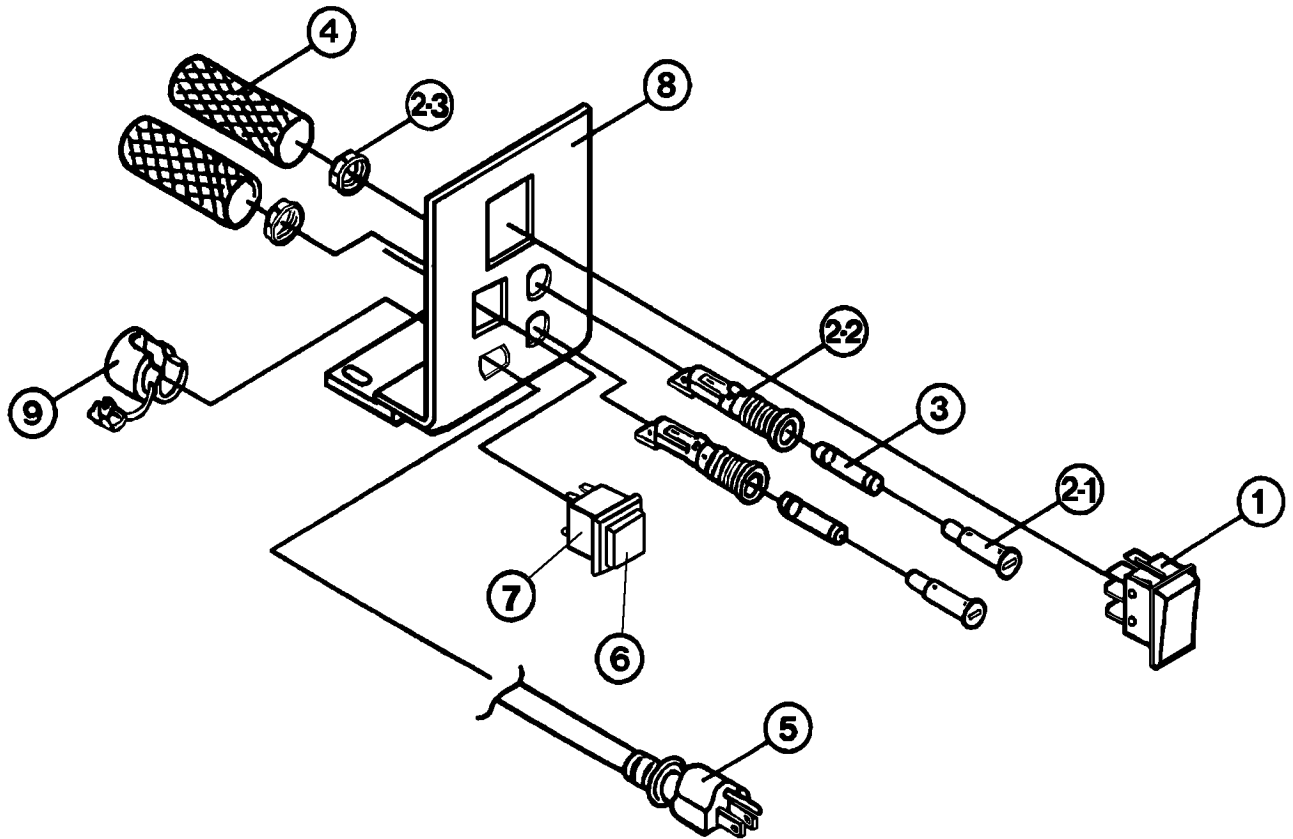
CLESTA CHAIR FOOT CONTROL SECTION



INDEX NO.	PARTS CODE NO.	DESCRIPTION	QUANTITY
1	G-0117	FOOT CONTROL LABEL	1
2	J-3276	FOOT CONTROL DISC (NOTE 1)	1
3	M-3006	FOOT CONTROL COVER (NOTE 1)	1
4	G-0115	FOOT CONTROL CAP	1
5	M-3005	FOOT CONTROL BODY	1
6	G-0116	FOOT CONTROL RUBBER SPRING	1
7	X-8124	FOOT CONTROL P.C.B. W/SWITCHES	1
	X-7325	SWITCH ONLY FOR CONTROL P.C.B.	1
8	M-3007	SWITCH PLATE	1
9	X-8128	WIRE HARNESS E-A0012	1

NOTE ; WHEN ORDERING PARTS FOOT CONTROL LABEL (G-0117) HAS TO BE ORDERED TOGETHER.

CLESTA CHAIR POWER SUPPLY SECTION

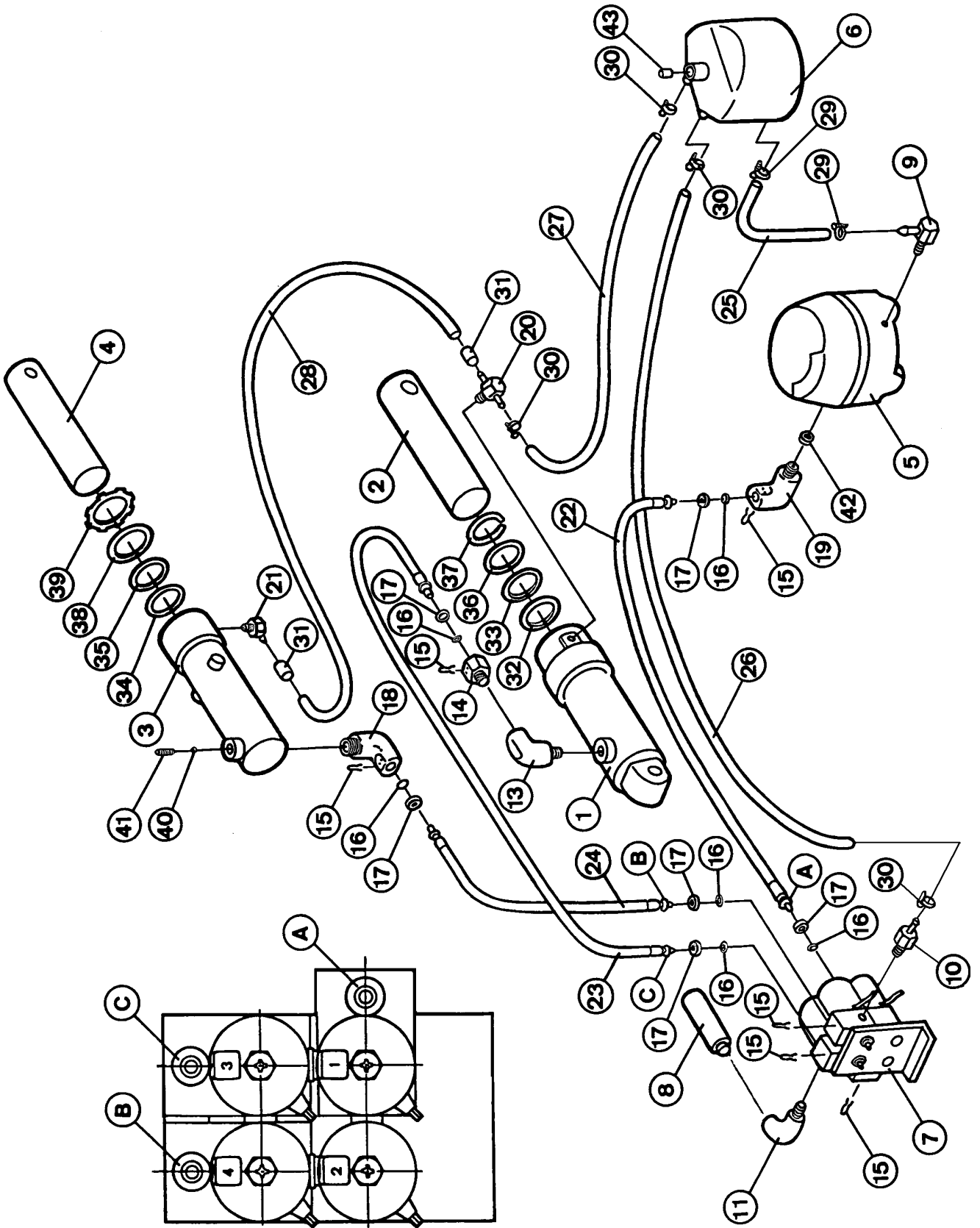


INDEX NO.	PARTS CODE NO.	DESCRIPTION	QUANTITY
1	DEL10AA	MAIN SWITCH (100/115V)	1
	X-6678	MAIN SWITCH (220/240V)	1
	X-1981	MAIN SWITCH (ENGLAND TYPE)	1
2-1, 2, 3	X-6726	FUSE HOLDER (100/115V)	2
	X-6740	FUSE HOLDER (220/240V)	2
	X-6890	FUSE HOLDER (ENGLAND TYPE)	2
3	X-5617	FUSE 10A (100/115V)	2
	X-5990	FUSE 6.3A (220/240V)	2
	X-6888	FUSE 6.3A (ENGLAND TYPE)	2
4	-----	GUARD TUBE	2
	X-6352	GUARD TUBE (ENGLAND TYPE)	2
5	X-6118	POWER SUPPLY CABLE	1
	X-5190	POWER SUPPLY CABLE (BSI TYPE)	1
	X-5035	POWER SUPPLY CABLE (VDE TYPE)	1
	X-1786	POWER SUPPLY CABLE (SAA TYPE)	1
	X-5999	POWER SUPPLY CABLE (UL TYPE)	1
6	DEMR09AA	PRESET SWITCH CAP	1
7	DEMR08AA	PRESET SWITCH BODY	1
	-----	PRESET SWITCH ASSEMBLY (BODY & CAP)	1
8	M-3008	POWER SUPPLY PANEL	1
	M-3009	POWER SUPPLY PANEL (ENGLAND TYPE)	1
9	F-2328	BUSH FOR POWER SUPPLY CABLE	1
	U-3418	BUSH FOR POWER SUPPLY CABLE (ENGLAND TYPE)	1

NOTE ; VDE TYPE/ BELGIUM, GERMANY, FRANCE, ITALY, SWEDEN, PORTUGAL, SWITZERLAND, DENMARK, ICELAND, NORWAY, FINLAND, SPAIN

BSI TYPE/ ENGLAND
SAA TYPE/ AUSTRALIA
UL TYPE/ U.S.A.

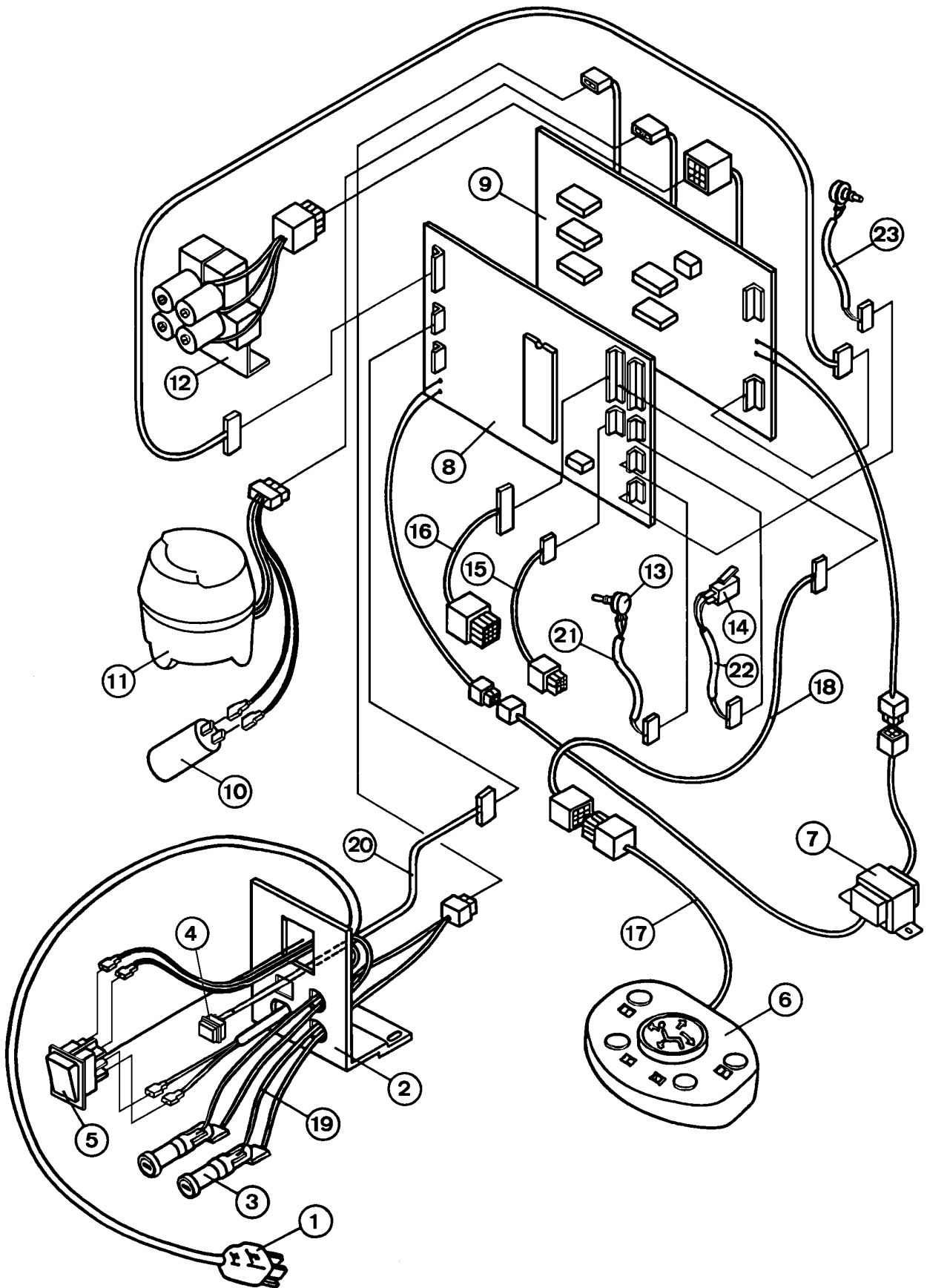
CESTA CHAIR HYDRAULIC SECTION



CESTA CHAIR HYDRAULIC SECTION

INDEX NO.	PARTS CODE NO.	DESCRIPTION	QUANTITY
1	K-3012	ELEVATION CYLINDER	1
2	T-3432	ELEVATION CYLINDER RAM SHAFT	1
3	N-3720	RECLINING CYLINDER	1
4	N-3721	RECLINING CYLINDER RAM SHAFT	1
5	D-6063	MOTOR PUMP ASSEMBLY 5LP (100V)	1
	D-6065	MOTOR PUMP ASSEMBLY 5LP (115V)	1
	D-6067	MOTOR PUMP ASSEMBLY 5LP (220V)	1
	D-6069	MOTOR PUMP ASSEMBLY 5LP (240V)	1
6	C-3244	OIL RESERVOIR - C	1
7	X-8120	SOLENOID VALVE UNIT (100V) (COIL X-8183 100V)	1
	X-8121	SOLENOID VALVE UNIT (115V) (COIL X-8184 115V)	
	X-8122	SOLENOID VALVE UNIT (220V) (COIL X-8185 220V)	
	X-8123	SOLENOID VALVE UNIT (240V) (COIL X-8186 240V)	
8	X-8107	ACCUMULATOR	1
9	Q-3171	L-MOTOR NIPPLE	1
10	F-6251	TANK NIPPLE 1/8"	1
11	G-0222	STREET ELBOW 1/4"-1/8"	1
13	F-6218	STREET ELBOW 1/4"-1/4"	1
14	SALA03AO	MINI HOSE JOINT W/O-RING P3, RETAINER RING & U-PIN	1
15	Q-6237	U-PIN	6
16	F-3470	O-RING P3	6
17	Q-6241	RETAINER RING	6
18	SALA05AO	HOSE ELBOW 1/8" W/O-RING P3, RETAINER RING & U-PIN	1
19	SALA06AO	HOSE ELBOW 1/4" W/O-RING P3, RETAINER RING & U-PIN	1
20	Q-3585	T-JOINT 1/8"	1
21	Q-3300	L-NIPPLE	1
22	U-3324	HIGH PRESSURE HOSE ID.3-430L	1
23	Q-2244	HIGH PRESSURE HOSE ID.3-1000L	1
24	Q-2243	HIGH PRESSURE HOSE ID.3-580L	1
25	Q-2279	LOW PRESSURE HOSE ID.8-320L	1
26	X-5557	LOW PRESSURE HOSE ID.5-340L	1
27	X-5557	LOW PRESSURE HOSE ID.5-700L	1
28	X-5513	LOW PRESSURE HOSE ID.4-620L	1
29	F-2269	WIRE CLAMP ID.13	2
30	F-2268	WIRE CLAMP ID.10	4
31	X-5514	SLEEVE ID.6	2
32	F-3467	O-RING T127	1
33	X-6346	O-RING P45	1
34	F-1019	O-RING OD.5 X 30 X 40	1
35	F-3238	O-RING P30	1
36	F-3427	FELT PACKING FOR ELEVATION CYLINDER	1
37	F-3481	FELT HOLDER FOR ELEVATION CYLINDER	1
38	F-1005	FELT PACKING FOR RECLINING CYLINDER	1
39	F-1006	FELT HOLDER FOR RECLINING CYLINDER	1
40	X-5522	STEEL BALL OD.4	1
41	-----	SET SCREW	1
42	F-6133	STRAINER	
43	F-6142	FILTER FOR OIL RESERVOIR	1
NIL	X-4204	OIL (IDEMITSU SUPER HYDRAULIC FLUID #32)	0.5L

CLESTA CHAIR ELECTRIC SECTION

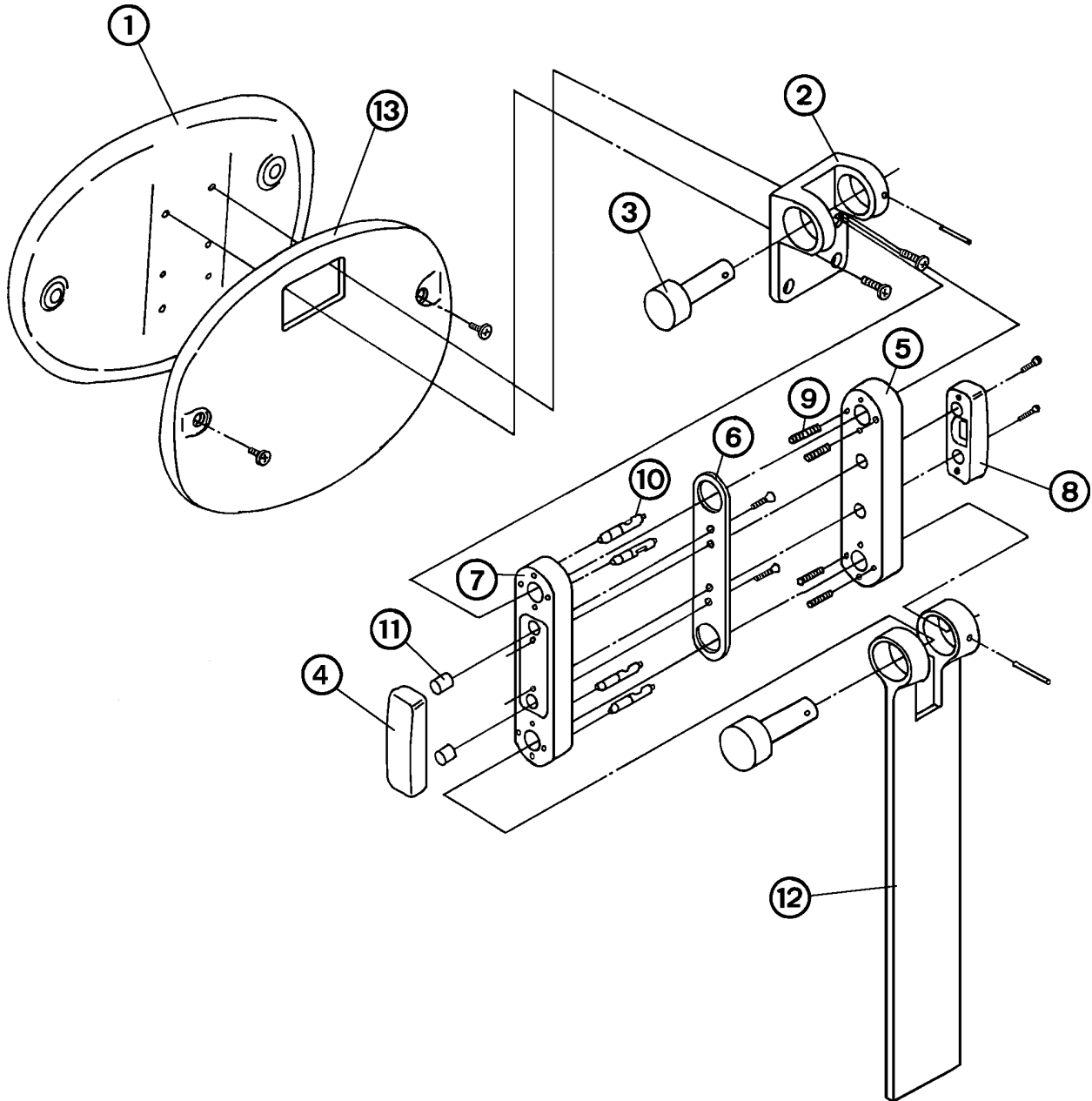


CLESTA CHAIR ELECTRIC SECTION

INDEX NO.	PARTS CODE NO.	DESCRIPTION	QUANTITY
1	X-6118	POWER SUPPLY CABLE	1
	X-5190	POWER SUPPLY (BSI TYPE)	
	X-5035	POWER SUPPLY CABLE (VDE TYPE)	
	X-1786	POWER SUPPLY CABLE (SAA TYPE)	
	X-5999	POWER SUPPLY CABLE (UL TYPE)	
2	M-3008	POWER SUPPLY PANEL	1
	M-3009	POWER SUPPLY PANEL (ENGLAND TYPE)	
3	X-6726	FUSE HOLDER (100/115V)(FUSE 10A X-5617)	2
	X-6740	FUSE HOLDER (220/240V)(FUSE 6.3A X-5990)	
	X-6890	FUSE HOLDER (ENGLAND TYPE)(FUSE 6.3A X-6888)	
4	-----	RESET SWITCH ASSEMBLY (BODY & CAP)	1
	DEMR08AA	RESET SWITCH (BODY)	
	DEMR09AA	RESET SWITCH (CAP)	
5	DELR10AA	MAIN SWITCH (100/115V)	1
	X-6678	MAIN SWITCH (220/240V)	
	X-1978	MAIN SWITCH (ENGLAND TYPE)	
6	-----	FOOT SWITCH ASSEMBLY	1
7	X-2107	TRANSFORMER TK-100V-2	1
	X-2801	TRANSFORMER TK-115US-2	
	X-2109	TRANSFORMER TK-220VU-2	
	X-2110	TRANSFORMER TK-240V-2S	
8	X-8204	CONTROL P.C.B.	1
9	X-8115	RELAY P.C.B. (100/115V)	1
	X-8116	RELAY P.C.B. (220/240V)	
10	X-5001	CAPACITOR (100V)	1
	X-5002	CAPACITOR (115/220/240V)	
11	D-6063	MOTOR PUMP ASSEMBLY 5LP (100V)	1
	D-6065	MOTOR PUMP ASSEMBLY 5LP (115V)	
	D-6067	MOTOR PUMP ASSEMBLY 5LP (220V)	
	D-6069	MOTOR PUMP ASSEMBLY 5LP (240V)	
12	X-8120	SOLENOID VALVE UNIT (100V) (COIL 100V X-8183)	1
	X-8121	SOLENOID VALVE UNIT (115V) (COIL 115V X-8184)	
	X-8122	SOLENOID VALVE UNIT (220V) (COIL 220V X-8185)	
	X-8123	SOLENOID VALVE UNIT (240V) (COIL 240V X-8186)	
13	X-6517	POTENTIOMETER (FOR ELEVATION & RECLINING)	2
14	X-6313	MICRO SWITCH FOR CHAIR LOWERING SECURITY	1
15	X-8134	WIRE HARNESS E-A0003	1
16	X-8133	WIRE HARNESS E-A0002	1
17	X-8128	WIRE HARNESS E-A0012	1
18	X-8127	WIRE HARNESS E-A0011	1
19	-----	WIRE HARNESS (MAIN SWITCH TO FUSE / DOUBLE FUSE)	1
	-----	WIRE HARNESS (MAIN SWITCH TO FUSE / SINGLE FUSE)	1
20	X-6520	WIRE HARNESS (PRESET SWITCH TO CONTROL P.C.B.)	1
21	X-6590	WIRE HARNESS (POTENTIOMETER FOR ELEVATION TO CONTROL P.C.B.)	1
22	X-8126	WIRE HARNESS (MICRO SWITCH TO CONTROL P.C.B.)	1
23	X-4279	WIRE HARNESS (POTENTIOMETER FOR RECLINING TO CONTROL P.C.B.)	1

NOTE; VDE TYPE/ BELGIUM, GERMANY, FRANCE, ITALY, SWEDEN, PORTUGAL, SWITZERLAND,
 DENMARK, ICELAND, NORWAY, FINLAND, SPAIN
 BSI TYPE/ ENGLAND
 SAA TYPE/ AUSTRALIA
 UL TYPE/ U.S.A.

CLESTA CHAIR HEADREST SECTION
(TWIN AXIS HEADREST)



INDEX NO.	PARTS CODE NO.	DESCRIPTION	QUANTITY
1	C-0025	HEADREST CUSHION ASSEMBLY W/VINYL LEATHER COVERING	1
	L-3621, DEMR97AA	HEADREST CUSHION ASSEMBLY W/O VINYL LEATHER COVERING	
2	U-3800	HEADREST KNUCKLE	1
3	U-3796	LINK PIN	2
4	U-3798	HEADREST RELEASE BUTTON (LEFT)	1
5	J-3691	HEADREST LINK (LEFT)	1
6	U-3795	LOCK PLATE	1
7	J-3690	HEADREST LINK (RIGHT)	1
8	U-3797	STATIONARY BUTTON (RIGHT)	1
9	F-6359	SPRING	4
10	U-3799	PIN	4
11	Q-8703	SPACER	2
12	J-3689	HEADREST BAR	1
13	M-3029	HEADREST REAR COVER	1